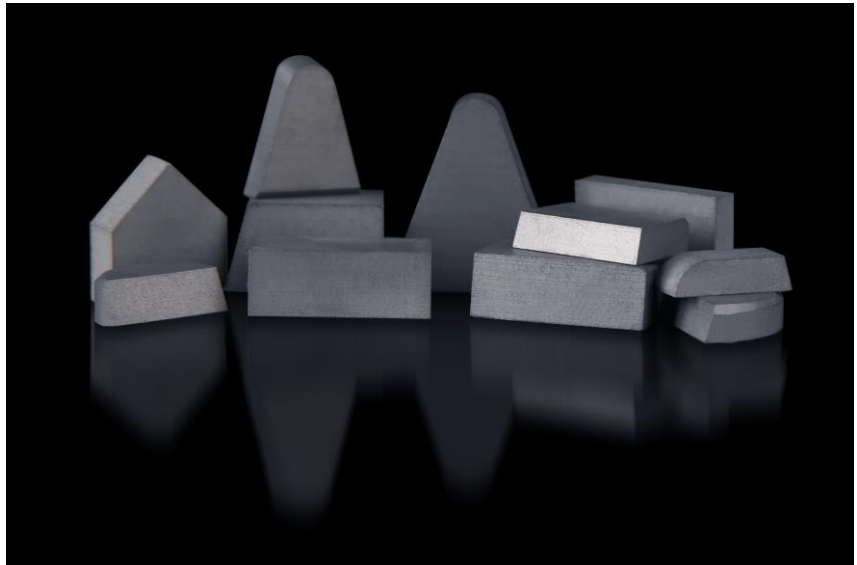


MIDLAND CARBIDES
LIMITED

Standard Tip Drawings

Valid From 05/04/16



Midland Carbides Limited
30 Tournament Way
Ivanhoe Industrial Estate
Ashby-de-la-Zouch
LE65 2UU

Tel: 01530 414949
Fax: 01530 417039
www.midlandcarbides.co.uk
sales@midlandcarbides.co.uk

Contents

BHMA Imperial Rectangular Tips		3-4
Round Nose Tips	No. 10 – 36	5
Turning Tips	No. 40 – 84	6
Bar Turning Tips	No. 100 – 123	7
Turning & Facing Tips	No. 190 – 218	8
Parting Tips	No. 260 – 268	9
Round Nose Facing Tips	No. 430 – 434	10
Round Nose Tips	No. 490 – 494	11
Reamer Tips	No. 520 – 528	12
Knife Tips	No. 2130 – 2157	13
Centre Tips	No. 2600 – 2606	14
Spotfacing Tips	No. 3600 – 3622	15
ISO Metric A & B Series		16
ISO Metric C Series		17
ISO Metric D Series		18
ISO Metric E Series		19
Drill Tips		20
Reamer Slugs		21
Shot Blast Nozzles		22
Rotec Tools		23

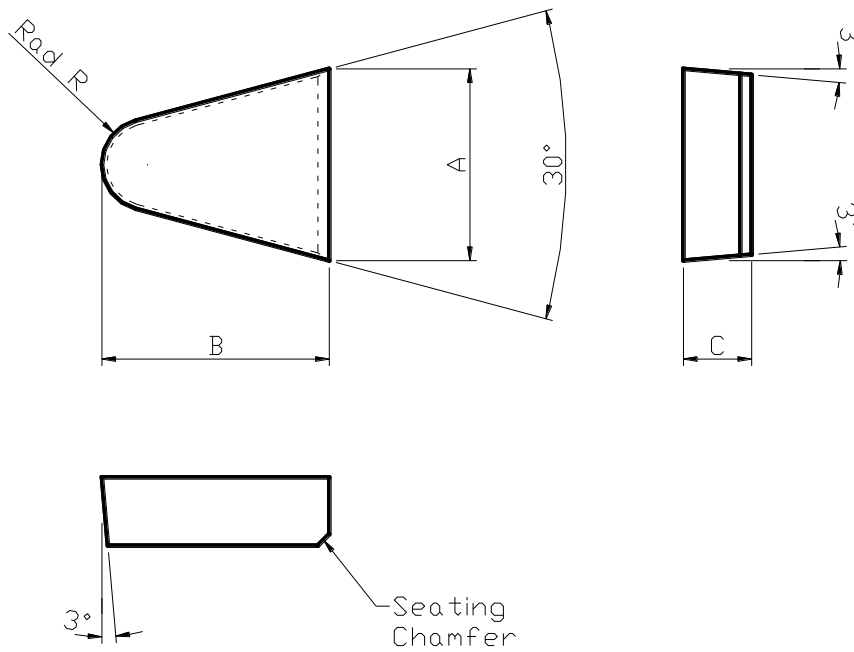
BHMA Imperial Rectangular Tips

Tip No.	Tip Dimensions (inches)		
	Length	Width	Thickness
550	3/16	1/16	1/32
532		3/16	1/16
551	1/4	3/32	1/32
9536		3/16	1/16
534		1/4	
9555			3/16
9554			3/16
280	9/32	9/32	5/64
535	5/16	1/4	3/32
282	11/32	11/32	5/64
530	3/8	1/8	1/16
9556		1/4	3/32
9578			1/8
536		9/32	3/32
9569		3/8	1/8
538		13/32	13/32
537	7/16	11/32	1/8
540	15/32	15/32	7/64
9500	1/2	3/32	3/64
531		5/32	1/16
533		3/16	3/32
9570			1/8
9558		1/4	1/16
9559			3/32
9571			1/8
9580		9/32	3/32
9557		3/8	
9574		13/32	1/8
539			3/16
9581			1/8
9568		1/2	5/32
9582			5/32
541		9/16	15/32
9583	5/8	3/16	3/16
9560		1/4	3/32
9575		3/8	1/8
9584			5/32
543		17/32	

BHMA Imperial Rectangular Tips

Tip No.	Tip Dimensions (inches)			
	Length	Width	Thickness	
545	3/4	3/32	1/16	
9505		5/32	5/64	
9579		1/4	3/32	1/8
9585			3/16	
9563			1/8	
9573		3/8	5/32	1/8
9586			1/16	
9562		1/2	1/8	5/32
9561			3/16	
542			1/8	
9587			5/32	
544		19/32	3/16	
9588		7/8	5/8	1/8
9564			1/4	
9589	3/8		3/16	
546	1	3/16	3/32	
9577			3/16	
547		1/4	3/32	1/4
9572			3/16	
9590		3/8	3/16	
9576		1/2	1/8	
9591		5/8	3/16	
9592		3/4	1/8	
9565			1/4	
9566			3/32	
9593	1 1/4	1/4	1/8	
9594		3/8	3/16	
548		1/2	1/4	
9595	1 1/2	1/2	3/16	
549	1 7/8	3/8	1/8	
9567	2	5/16		

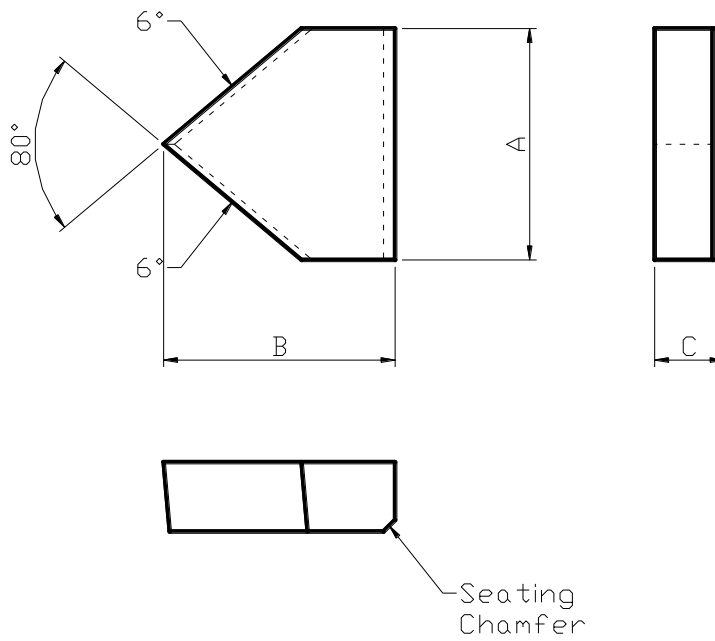
Round Nose Tips No. 10 - 36



Tip No.	Tip Dimensions (inches)			
	A	B	C	R
10	.330	7/16	3/32	1/16
12	.415	1/2	1/8	3/32
14	.330	7/16	5/32	1/16
16	.530	5/8	5/32	1/8
18	.415	1/2	3/16	3/32
20	.640	3/4	3/16	5/32
22	.530	5/8	1/4	1/8
24	.640	3/4	1/4	5/32
26	.760	7/8	1/4	3/16
28	.640	3/4	5/16	5/32
30	.760	7/8	5/16	3/16
32	.760	7/8	3/8	3/16
34	.940	1 1/8	5/16	7/32
36	1.055	1 1/4	3/8	1/4

Tips 3/16" thick or below are supplied without 3° clearances

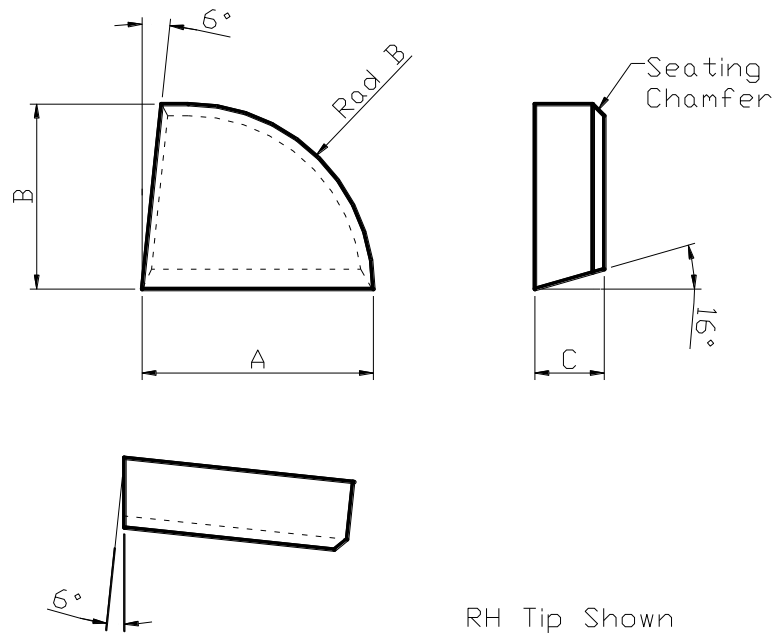
Turning Tips No. 40 - 84



Tip No.	Tip Dimensions (inches)		
	A	B	C
40	13/32	3/8	3/32
44	17/32	1/2	1/8
48	13/32	3/8	5/32
52	21/32	5/8	5/32
56	17/32	1/2	3/16
60	25/32	3/4	3/16
64	21/32	5/8	1/4
68	25/32	3/4	1/4
72	1 1/32	1	1/4
76	25/32	3/4	5/16
80	1 1/32	1	5/16
84	1 1/32	1	3/8

Tips 1/8" thick or below are supplied without 6° clearances

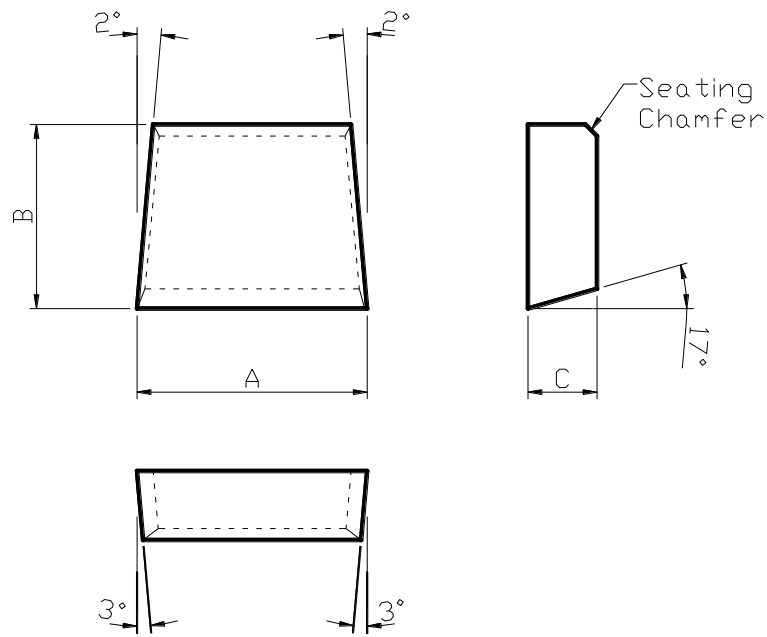
Bar Turning Tips No. 100 – 123



Tip No.		Tip Dimensions (inches)		
RH	LH	A	B	C
100	100	5/16	1/4	3/32
102	102	7/16	3/8	1/8
104	105	5/16	1/4	5/32
106	107	5/8	1/2	5/32
108	109	7/16	3/8	3/16
110	111	5/8	1/2	3/16
112	113	5/8	1/2	1/4
116	117	7/8	3/4	1/4
118	119	5/8	1/2	5/16
120	121	7/8	3/4	5/16
122	123	7/8	3/4	3/8

Tips 1/8" thick or below are supplied without 16° & 6° clearances

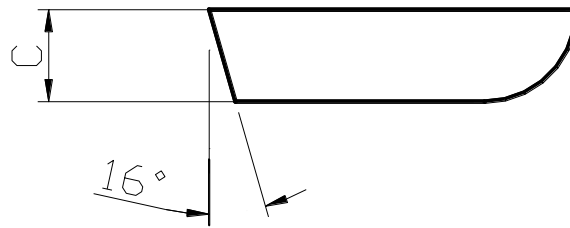
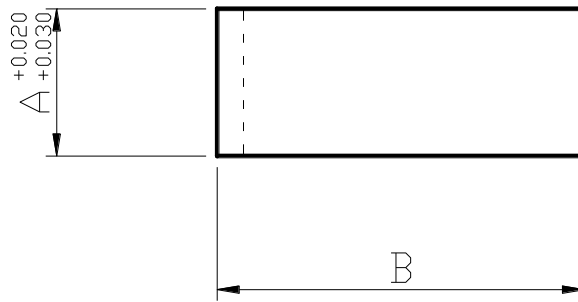
Turning & Facing Tips No. 190 - 218



Tip No.	Tip Dimensions (inches)		
	A	B	C
190	13/32	5/16	3/32
192	17/32	3/8	1/8
194	13/32	5/16	5/32
196	21/32	7/16	5/32
198	17/32	3/8	3/16
200	25/32	1/2	3/16
202	21/32	7/16	1/4
204	25/32	1/2	1/4
206	1 1/32	5/8	1/4
208	25/32	1/2	5/16
210	1 1/32	5/8	5/16
212	1 9/32	3/4	5/16
214	1 1/32	5/8	3/8
216	1 17/32	7/8	3/8
218	1 9/32	3/4	7/16

Tips 3/16" thick or below are supplied without 3° clearances

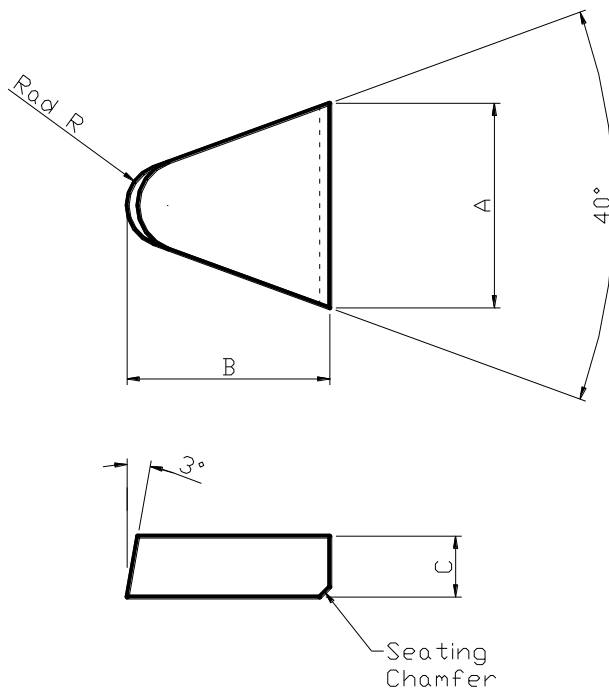
Parting Tips No. 260 - 268



Tip No.	Tip Dimensions (inches)		
	A	B	C
260	3/32	3/8	3/32
262	1/8	7/16	1/8
264	3/16	9/16	5/32
265	1/4	5/8	5/32
266	5/16	3/4	3/16
268	3/8	7/8	1/4

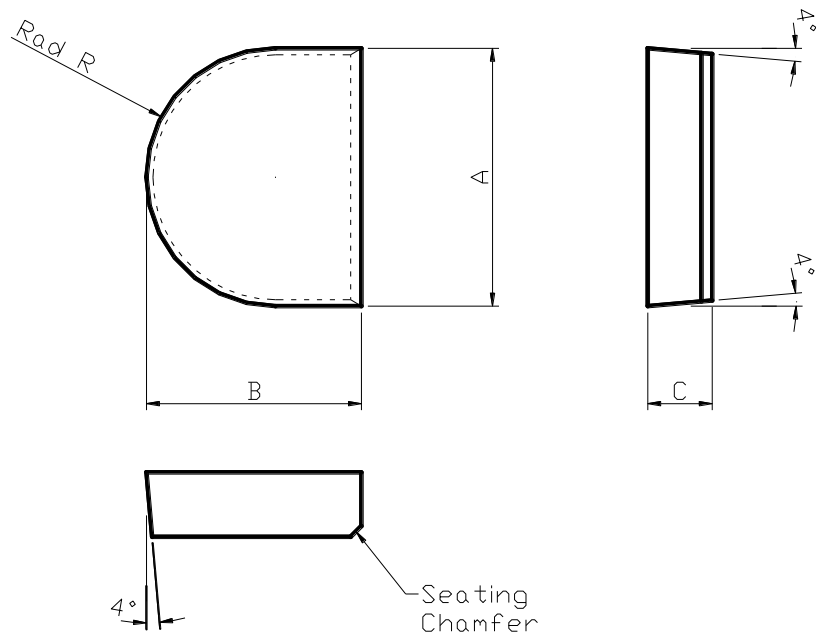
Tips 1/8" thick or below are supplied without 16° clearances

Round Nose Facing Tips No. 430 - 434



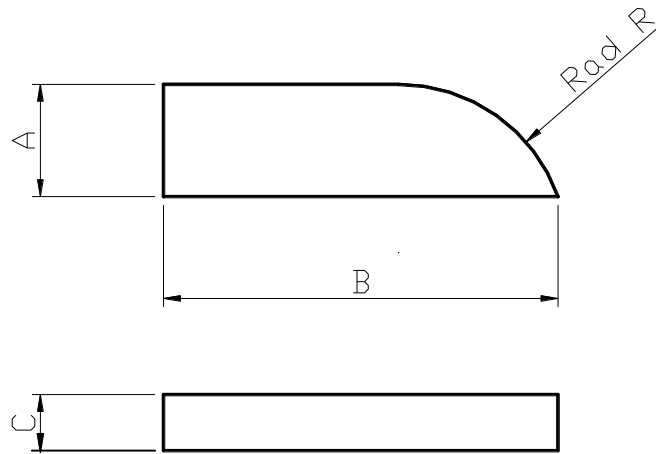
Tip No.	Tip Dimensions (inches)			
	A	B	C	R
430	.721	3/4	5/16	1/8
432	.812	7/8	3/8	1/8
434	.946	1	7/16	5/32

Round Nose Tips No. 490 - 494



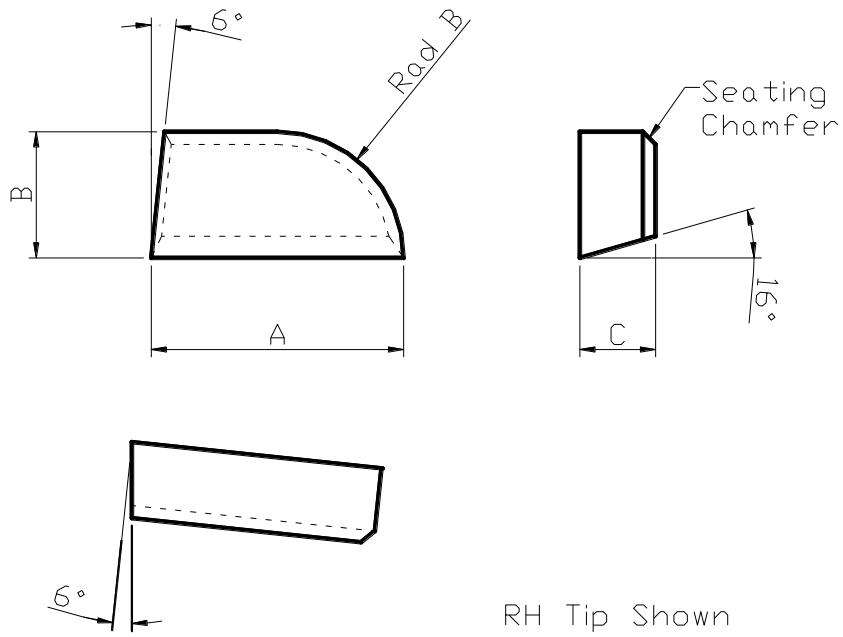
Tip No.	Tip Dimensions (inches)			
	A	B	C	R
490	25/32	5/8	5/16	25/64
492	1 1/32	7/8	3/8	33/64
494	1 17/32	1 1/4	3/8	49/64

Reamer Tips No. 520 - 528



Tip No.	Tip Dimensions (inches)			
	A	B	C	R
520	.065 / .075	3/8	.030 / .035	1/4
521	.095 / .105	1/2	.050 / .055	1/4
522	.125 / .135	11/16	.065 / .075	1/4
523	.155 / .165	11/16	.080 / .090	5/16
524	3/16	3/4	.105 / .110	5/16
525	1/4	7/8	.115 / .125	3/8
526	5/16	1	.130 / .140	1/2
528	.100 / .110	3/4	.085 / .090	1/4

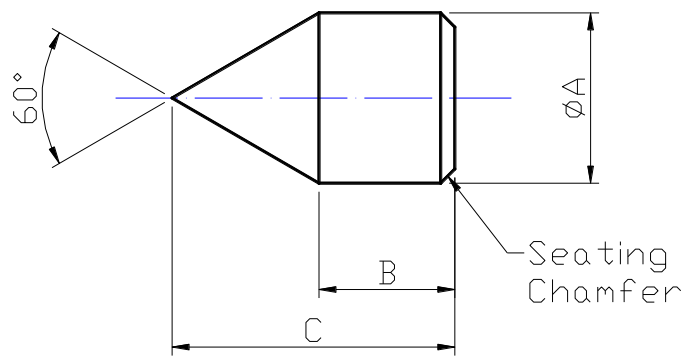
Knife Tips No. 2130 - 2157



Tip No.		Tip Dimensions (inches)		
RH	LH	A	B	C
2130	-	1/2	1/4	3/32
2132	-	5/8	5/16	1/8
2134	2135	1/2	1/4	5/32
2136	2137	3/4	3/8	5/32
2138	2139	5/8	5/16	3/16
2140	2141	7/8	1/2	3/16
2142	2143	3/4	3/8	1/4
2144	2145	7/8	1/2	1/4
2146	2147	1 3/16	5/8	1/4
2148	2149	7/8	1/2	5/16
2150	2151	1 3/16	5/8	5/16
2152	2153	1 3/16	5/8	3/8
2154	2155	1 1/2	11/16	11/32
2156	2157	1 1/2	11/16	7/16

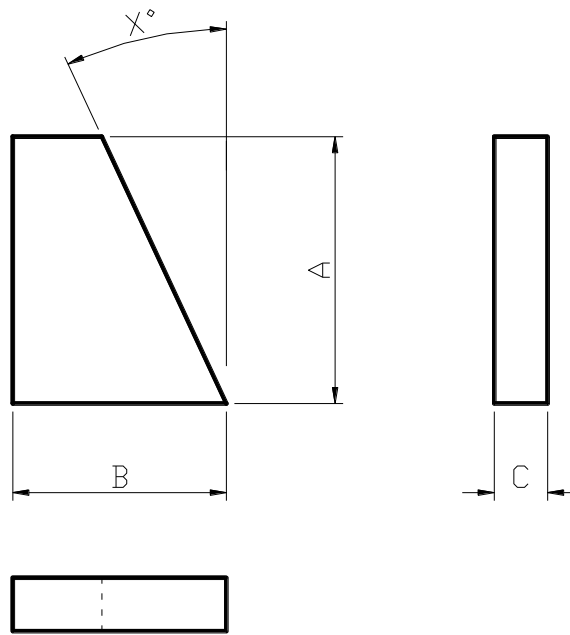
Tips 1/8" thick or below are supplied without 16° & 6° clearances

Centre Tips No. 2600 - 2606



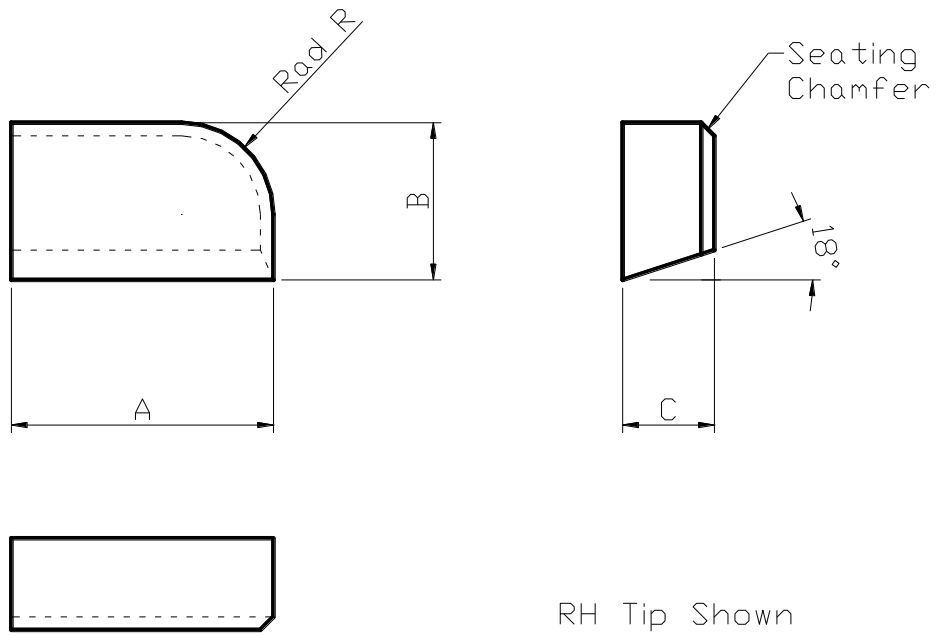
Tip No.	Tip Dimensions (inches)		
	ØA	B	C
2600	3/16	3/16	23/64
2601	1/4	7/32	29/64
2602	5/16	1/4	17/32
2603	7/16	3/8	49/64
2603 Ø1/2"	1/2	3/8	13/16
2604	5/8	1/2	1 3/64
2605	3/4	5/8	1 9/32
2606	7/8	11/16	1 29/64
2606 Ø1"	1	23/32	1 19/32

Spotfacing Tips No. 3600 - 3622



Tip No.	Tip Dimensions (inches)			
	A	B	C	X°
3600	9/32	3/8	3/32	30
3602	11/32	3/8	3/32	30
3604	13/32	3/8	3/32	25
3606	15/32	3/8	3/32	25
3608	1/2	1/2	1/8	25
3610	9/16	1/2	1/8	25
3612	5/8	1/2	1/8	20
3614	11/16	1/2	1/8	20
3616	11/16	9/16	5/32	25
3618	3/4	9/16	5/32	25
3620	13/16	9/16	5/32	20
3622	7/8	9/16	5/32	20

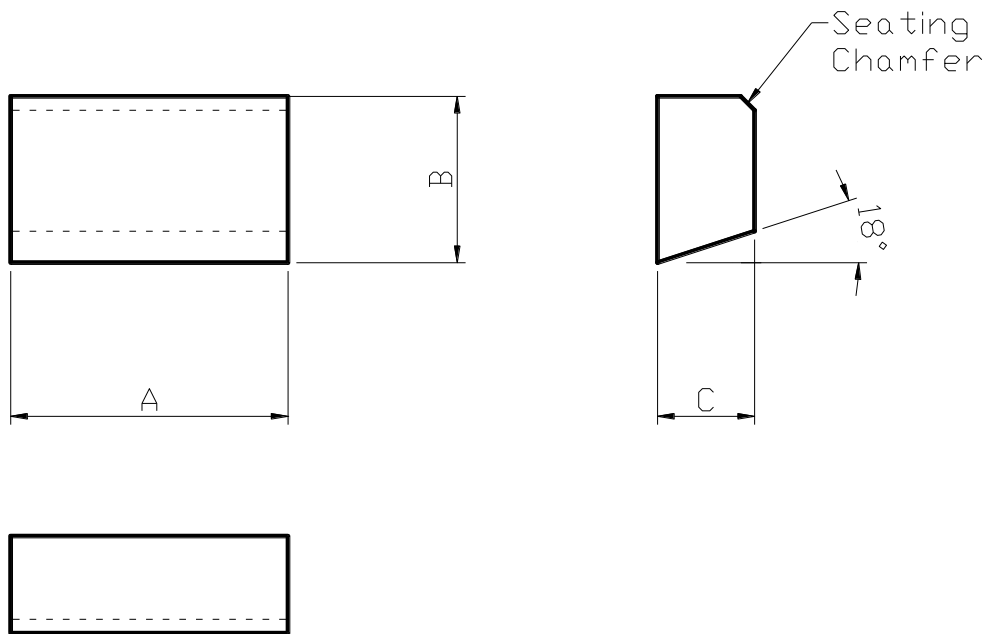
ISO Metric A & B Series



Tip No.		Tip Dimensions (mm)			
RH	LH	A	B	C	R
A5	B5	5	3	2	2
A6	B6	6	4	2.5	2.5
A8	B8	8	5	3	3
A10	B10	10	6	4	4
A12	B12	12	8	5	5
A16	B16	16	10	6	6
A20	B20	20	12	7	7
A25	B25	25	14	8	8
A32	B32	32	18	10	10
A40	B40	40	22	12	12
A50	B50	50	25	14	14

Tips 3mm thick or below are supplied without 18° clearances

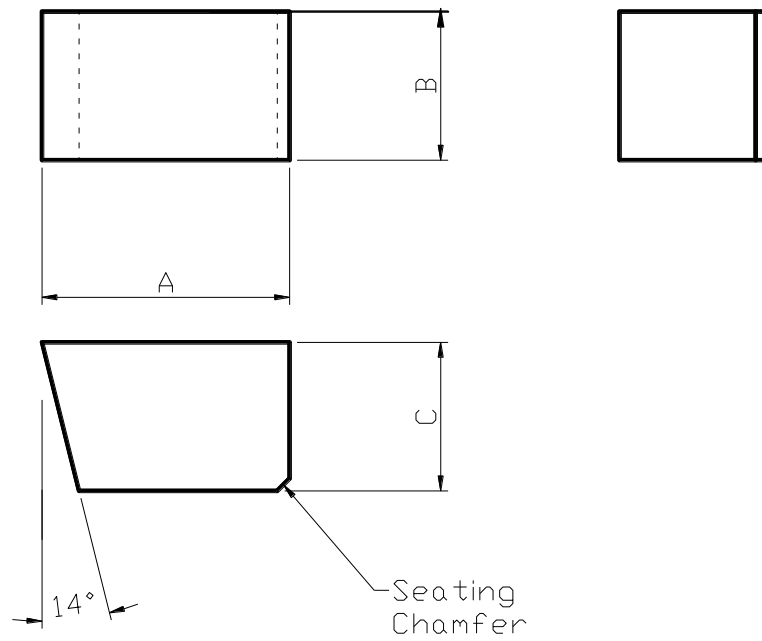
ISO Metric C Series



Tip No.	Tip Dimensions (mm)		
	A	B	C
C5	5	3	2
C6	6	4	2.5
C8	8	5	3
C10	10	6	4
C12	12	8	5
C16	16	10	6
C20	20	12	7
C25	25	14	8
C32	32	18	10
C40	40	22	12
C50	50	25	14

Tips 3mm thick or below are supplied without 18° clearances

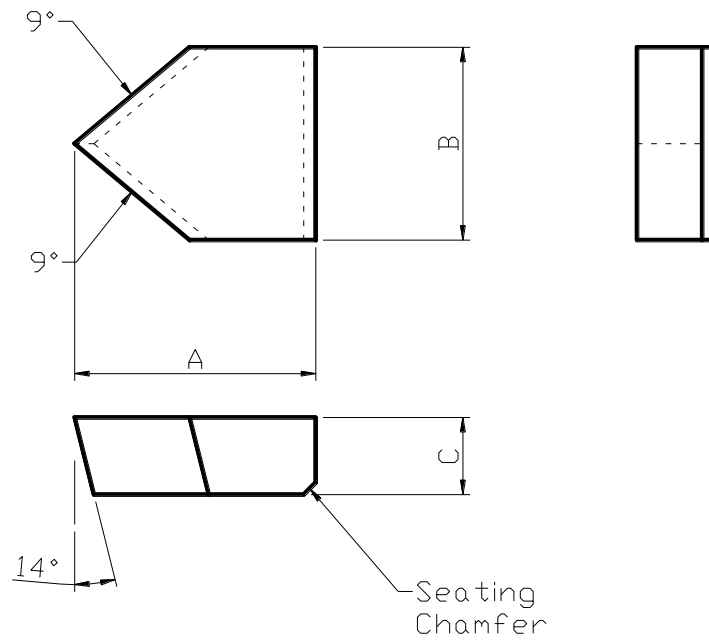
ISO Metric D Series



Tip No.	Tip Dimensions (mm)		
	A	B	C
D3	3.5	8	3
D4	4.5	10	4
D5	5.5	12	5
D6	6.5	14	6
D8	8.5	16	8
D10	10.5	18	10
D12	12.5	20	12

Tips 3mm thick or below are supplied without 14° clearances

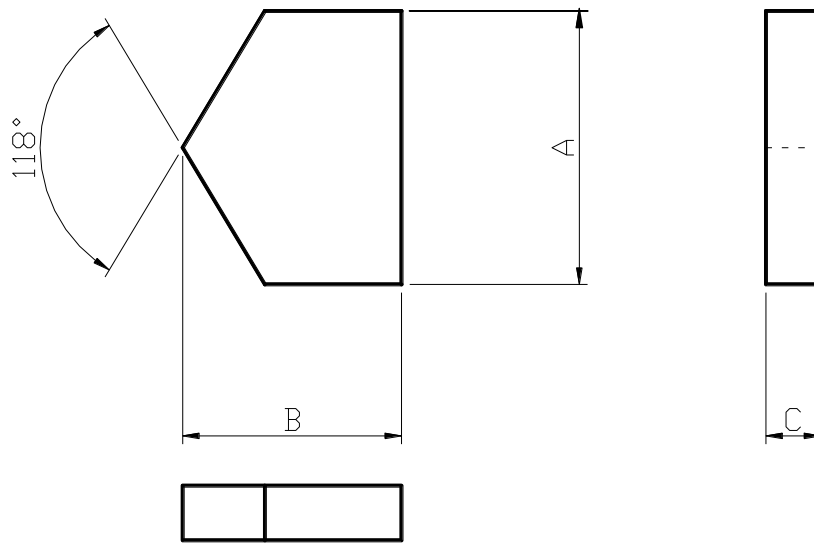
ISO Metric E Series



Tip No.	Tip Dimensions (mm)		
	A	B	C
E4	4	10	2.5
E5	5	12	3
E6	6	14	3.5
E8	8	16	4
E10	10	18	5
E12	12	20	6
E16	16	22	7
E20	20	25	8
E25	25	28	9
E32	32	32	10

Tips 3mm thick or below are supplied without 9° clearances

Drill Tips



Drill Ø (mm)	Imperial Equivalent	Tip Dimensions (mm)		
		A	B	C
3	1/8	4	4	1
4	5/32	5	5	1
5	3/16	6	6	1
6	1/4	7	8	1.5
7	9/32	8	8	1.5
8	5/16	9	9	1.5
9	11/32	10	9	2
10	3/8	11	9	2
11	7/16	12	10	2.5
12	15/32	13	11	2.5
13	1/2	14	12	2.75
14.5	9/16	15.5	13	3
16	5/8	17	14	3
17.5	11/16	18.5	16	3.5
19	3/4	20	18	4
20.5	13/16	21.5	18	4
22	7/8	23	18	4
24	15/16	25	19	4
26	1	27	20	4.5
28	1 1/8	29	21	4.5
30	1 3/16	31	21	4.5
32	1 1/4	33	22	5

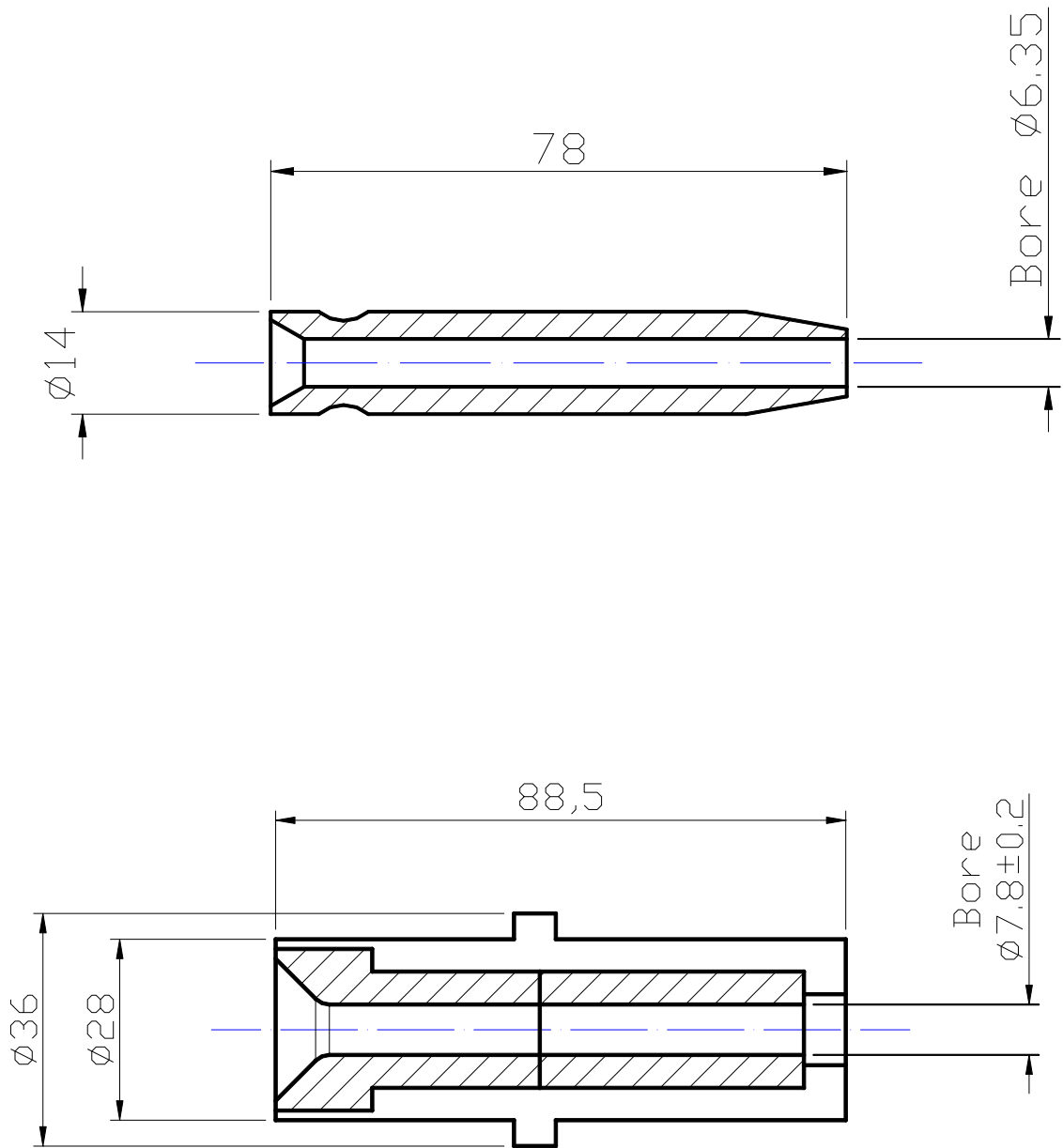
Reamer Slugs

Reamer Diameter		Sintered Slug Dimensions (inches)			
mm	inches	Ø	Bore	Length	Flutes
6.5	1/4	0.275	0.100	1/4	6
7	9/32	0.315			
8	5/16	0.335	0.150	5/16	
8.5	11/32	0.365			
9.5	3/8	0.400			
10.5	13/32	0.430			
11	7/16	0.450	0.200	11/32	
12	15/32	0.490			
12.5	1/2	0.520			
13.5	17/32	0.555			
14	9/16	0.585	0.250	3/8	8
15	19/32	0.620			
16	5/8	0.650			
16.5	21/32	0.680	0.300	7/16	
17.5	11/16	0.710			
18	23/32	0.745	0.375	17/32	
19	3/4	0.780			
19.5	25/32	0.810			
20.5	13/16	0.840			
21.5	27/32	0.875			
22	7/8	0.905			
23	29/32	0.935	0.390	9/16	
24	15/16	0.965			
24.5	31/32	1.000			
25.5	1	1.035	0.490	3/4	10
26	1 1/32	1.065	0.562		
27	1 1/16	1.095			
28	1 3/32	1.130			
28.5	1 1/8	1.160			
29.5	1 5/32	1.195	0.625		
30	1 3/16	1.215			
31	1 7/32	1.255			
32	1 1/4	1.280			

Standard reamer slugs are supplied in K20 with 10° left hand spiral / right hand cutting flutes.

The above list is shown as a guide only. Any combination of Ø, bore, length, flutes & grade can be made including keys, chamfers & steps as required. Please contact us with your requirements.

Shot Blast Nozzles



Rotec Tools

